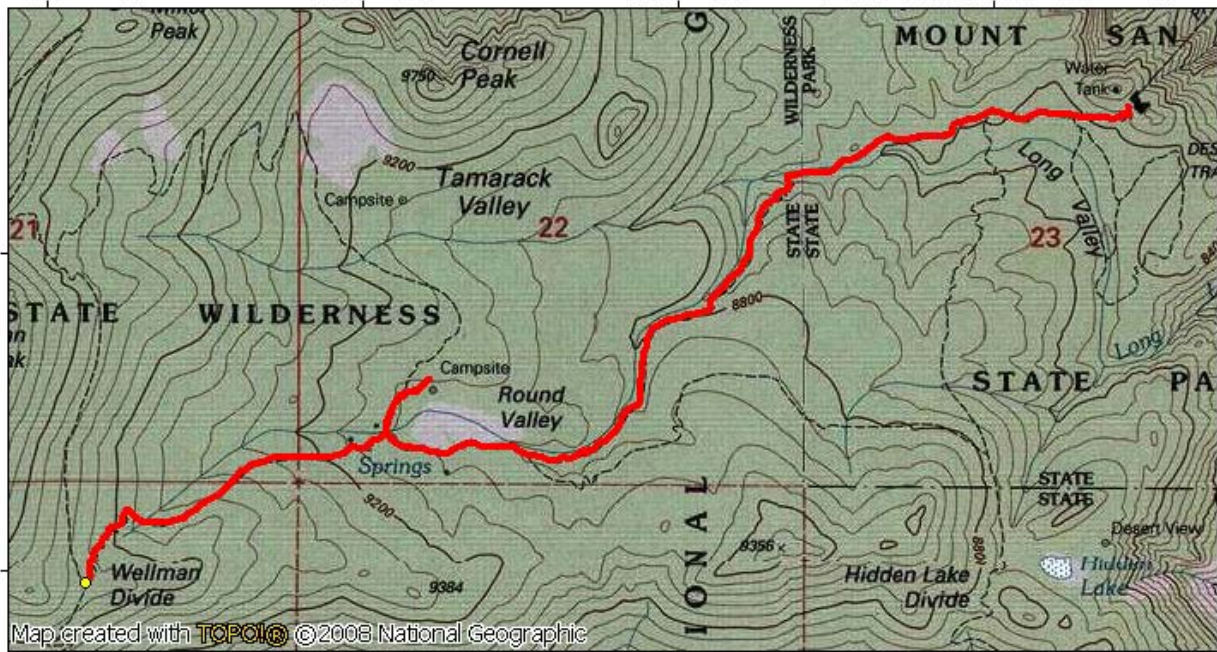


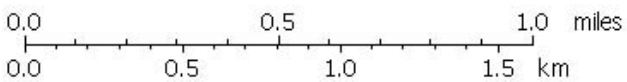
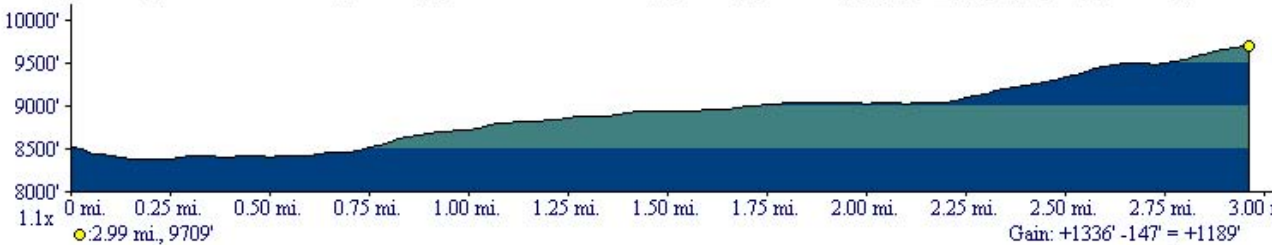
Tramway to Round Valley to Wellman Divide [www.wysokieprogi.org]

530000m E, 531000m E, 532000m E, WGS84 Zone 11S 533000m E,



Map created with **TOPOLIO** © 2008 National Geographic

530000m E, 531000m E, 532000m E, WGS84 Zone 11S 533000m E,



TN MN
12½°
08/24/09